



Total Solution Provider in Saw Device

SL7010V

70.0 MHz IF SAW Filter

9.8 MHz Bandwidth

Revision 1: 29. Oct. 2007



- Electrical Characteristics
 - Package Dimensions
 - Testing Environment
 - Frequency Characteristics
-

SAWNICS Inc.

460 Cheonheung-ri, Seonggeo-eup, Cheonan-si, Chungcheongnam-do, 330-836 / Korea.
Tel: +82 41 550 9372 / Fax: +82 41 550 9399 / www.sawnics.com

□ Electrical Characteristics

Maximum Ratings

Parameters Description	Unit	Minimum	Typical	Maximum
Operation Temperature Range	°C	-40	-	85
Storage Temperature Range	°C	-40	-	85
Maximum DC Voltage	V	-	-	10
Maximum Input Power	dBm	-	-	10
Source Impedance (single ended) ⁽¹⁾	Ω	-	50	-
Load Impedance (single ended) ⁽¹⁾	Ω	-	50	-
Package type & size	V			
Length x Width	mm ²	-	13.3 x 6.5	-
Height	mm	-	-	1.8

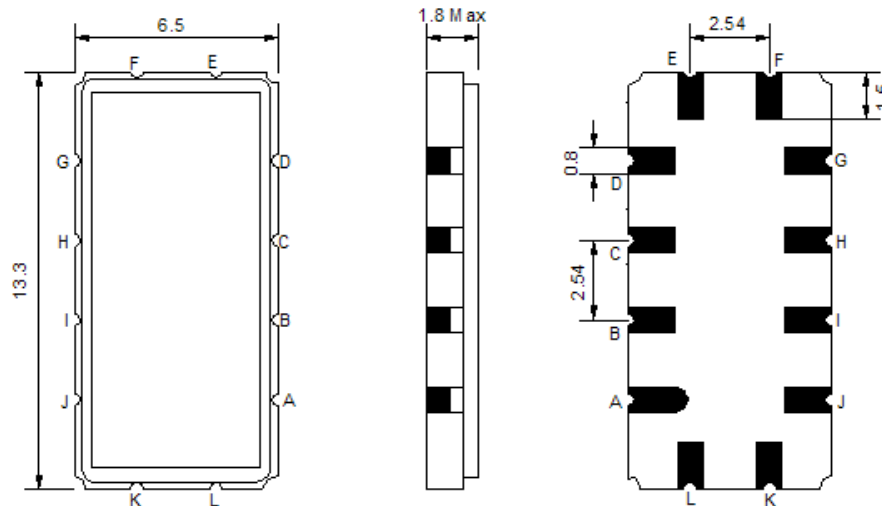
Electrical Specification

Parameters Description	Unit	Minimum	Typical	Maximum
Center Frequency (Fo)	MHz		70.0	
Insertion Loss at Fo	dB	-	10.4	12.0
Amplitude Ripple Variation	dB _{p-p}	-	0.55	1.0
Group Delay Variation	nsec	-	55	150
Absolute Delay at Fo	μsec	-	1.2	-
Temperature Coefficient	ppm/°C	-	-84	-
Bandwidth at -1.0 dB	MHz	9.5	9.8	-
Bandwidth at -3.0 dB	MHz	10.2	10.4	-
Bandwidth at -40.0 dB	MHz	-	13.1	14.0
Relative Attenuation:				
Lower sidelobe	dB	40	48	-
Upper sidelobe	dB	40	45	-
IN/OUT Return Loss at Fo	dB	-	-	-

Notes : (1) With Matching Network (Ref. Testing Environment Circuit as shown below).

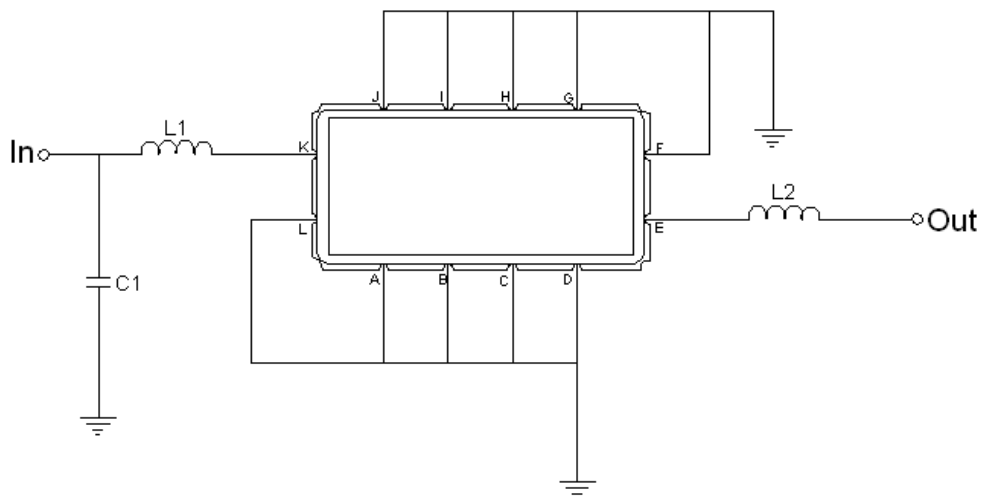
Those impedances could be modified with different impedance values and/or structures, if necessary.

□ Package Dimensions



Pin Description	
A, B, C, D, F, G, H, I, J, L	Ground
K	Input
E	Output

□ Testing Environment



Test Fixture & Values	
Input	L1=220nH Q >40, C1=20pF
Output	L2=180nH Q.>40
Source/Load Impedance	50 Ω

□ Frequency Characteristics

Frequency Response

